

nhow
ROTTERDAM





welcome to
nhow Rotterdam

art, architecture
and
one hell of a
view



event
venue

design &
lifestyle hotel

the
place to
be



welcome to nhow Rotterdam!

You won't want to close the curtains with a view like this.
A place where urban art and architecture become one.
And enjoy one hell of a view while you're at it!

Don't just visit the city: become part of it...

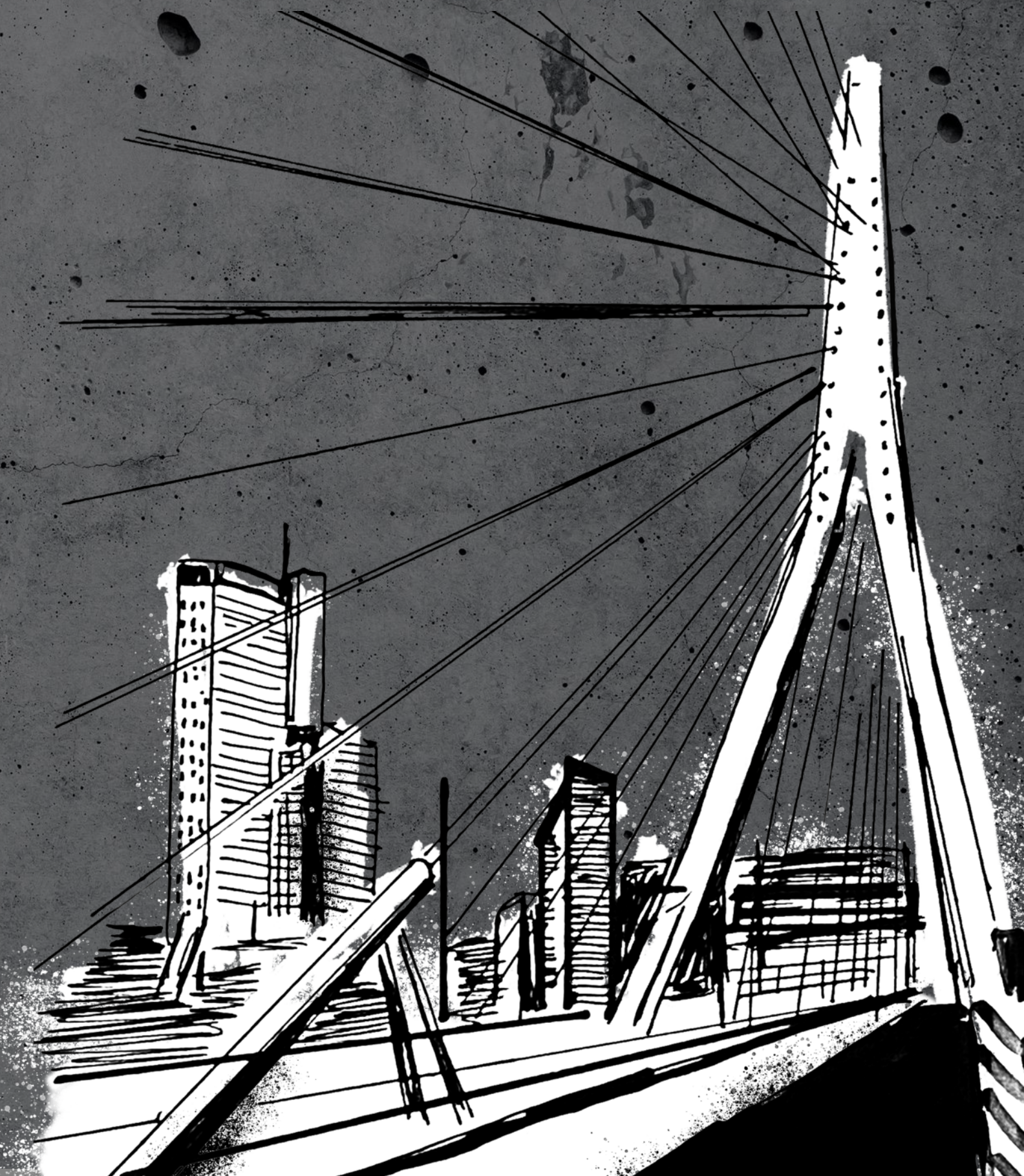
be free
get creative
relax
stay at nhow

this is why you book nhow...



...and not just another boring hotel

- 274 rooms
- 11 flexible meeting rooms
- Art, architecture & design
- First OMA/Rem Koolhaas hotel
- One hell of a view
- Free WIFI everywhere
- Covered parking (600+ places)
- Inspiration on the spot
- Iconic building: De Rotterdam
- Gastrobar ELVY & rooftop terrace

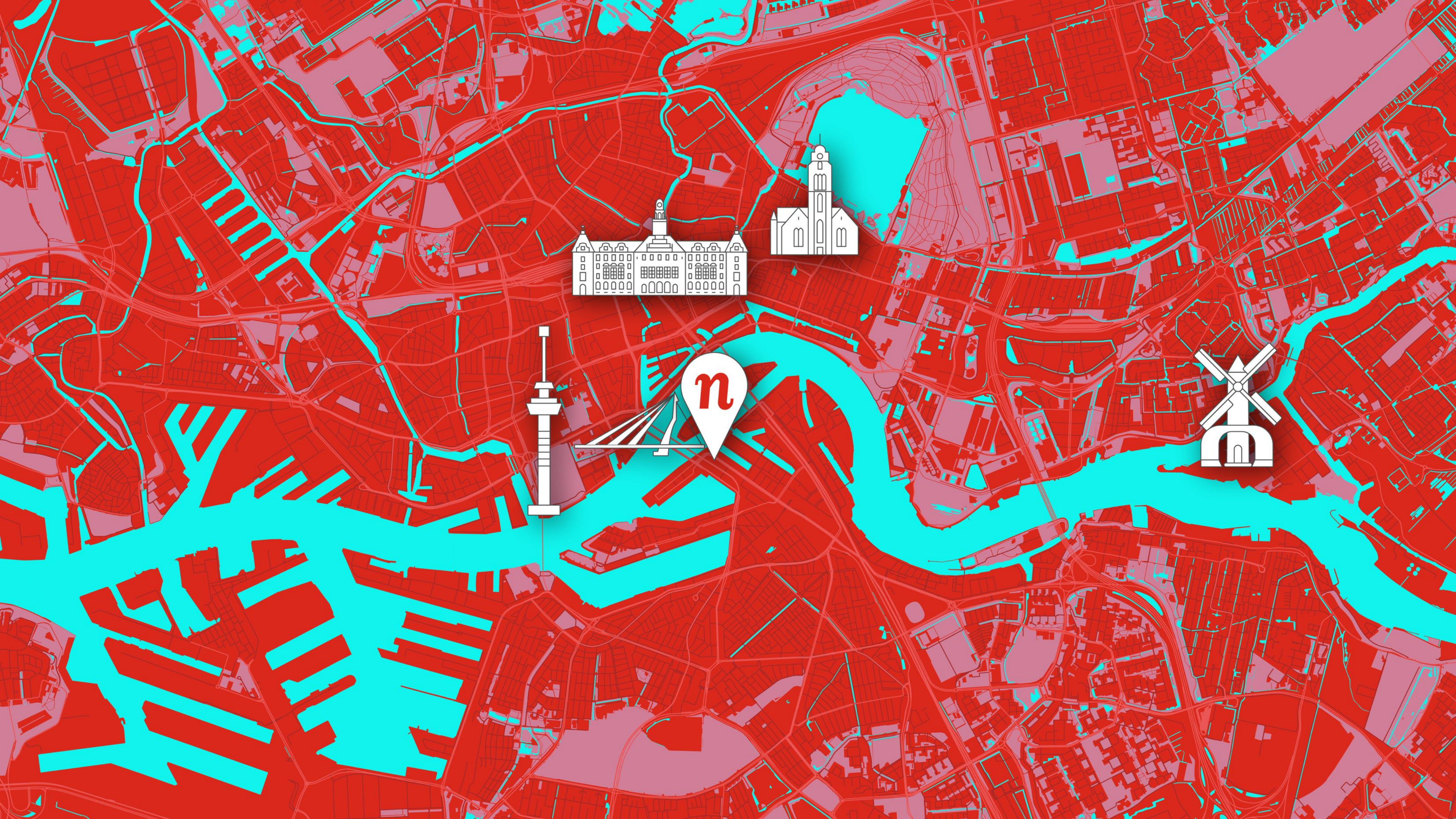


location

first hotel designed by Rem Koolhaas

now Rotterdam is located in de Rotterdam facing directly on the Maas with a clear view of Rotterdam's skyline. The Wilhelminakade is one of the most vibrant districts of the city, with many restaurants, bars and attractions in walking distance.







rooms

elevate your stay

Not only do our 274 rooms offer you everything to make your stay as comfortable as possible, but also the greatest view of Rotterdam.

You'll be as well-rested as you'll be inspired.

ROTTERDAM

rooms



nhow room

Your nhow Rotterdam journey starts here! Comfortable beds, Nespresso coffee and design furniture to help you reload during your stay in Rotterdam.



premium sunrise room

If sunrises are your thing, then this room is for you! Amazing panoramic view and a room measuring about 30m² with the comfiest bed and design furniture in town.



rooms

premium skyline view room

You will be so close to the Erasmus bridge it will be impossible not to see it. Divine sunsets and panoramic views over the Rotterdam Skyline, all to be enjoyed from the comfiest bed in town – keen on a small upgrade of the nhow experience?



rooms



nhow suite by Rem Koolhaas

Enter at your own risk... you might not want to return home after spending the night in one of our amazing suites. With 71 m² and a panoramic corner view over the Rotterdam skyline the nhow suites are simply amazing. A separate living room with design furniture.



gym
& spa

gym & spa

After an exciting day in Rotterdam, you're welcome to relax or exercise in our 70 m² gym.

Besides a gym equipped with fitness and cardio machines, we offer our guests a Finnish sauna with unbeatable views.



meeting
rooms

elevated business

nhow is the meeting place for forward thinkers.

Host an event unlike anything you've ever organized in the unique, creative and fully adaptive environment of nhow Rotterdam.

Bathed in all natural light thanks to Rem Koolhaas' open architecture, all of our conference spaces have an awe-inspiring view, state-of-the-art technology, local urban art and topnotch catering.

In short: this is something else!

plan your event with us

We can be pretty simple about our service: we'll do just about anything to make your event a success!

So, whatever it is that you need we'll do our very best to make it happen.

Completely rebuild an area? Book a DJ? Special banqueting? Extra suites?

Just let us know!

We like to think big.





meetings
& events

conference rooms

11 meeting &
event spaces

OMA | Rem Koolhaas
design

floor to
ceiling
windows

offering views of the
Erasmus Bridge, Maas
river and skyline

flexible spaces

with possibilities to divide
and combine spaces
approx. 66-543m² | 3.40-
meter-high ceilings

high quality
audio and video
facilities

making it an event to
remember.



meetings
& events

event locations

We like to give our guests a unique experience where they can create anything they want.

Even though we have several conference rooms that are amazing, we are pretty sure that The Loft will add an extra 'wow' to your meetings & events.



the loft

The Loft is our newly added state-of-the-art Meetings & Events venue: 700m2 of fully customizable space.

The best thing is, you can not only host meetings but also throw an after drink or party as well. And if you feel like hosting an exhibition, fashion show, wedding party or event, we will make it happen!

The Loft is designed to inspire in a spectacular way with of course the best view in town.

- Unique open space
- Up to 400 guests capacity
- Floor-to-ceiling windows
- Custom-built mobile bar
- Movable separation walls
- Customizable lighting grid
- Top-notch F&B facilities
- Integrated audio / video facilities
- Unlimited customizability



eat &
drink

eat and drink

Like any other metropolitan city, Rotterdam represents many different cultures and cuisines, and this is represented in our Gastrobar ELVY. Enjoy the many flavors from around the world, with a distinct Rotterdam twist. Inside, or at our roof top terrace overlooking the Rotterdam Skyline.

Wah
Ban

eat &
drink



breakfast

tuck in to our famous
nhow breakfast



eat &
drink

elvy gastrobar

Our cocktails and street food menu are just as wild and colourful as the Elvy Gastrobar design itself. Immerse yourself into an urban jungle, where art and architecture become one.

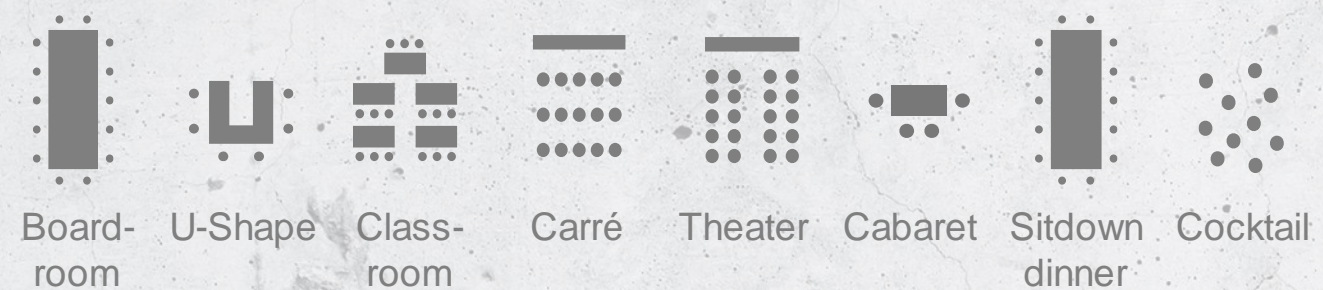


eat &
drink

rooftop terrace

enjoy tasty urban food or a
cocktail with a breathtaking
view of Rotterdam.





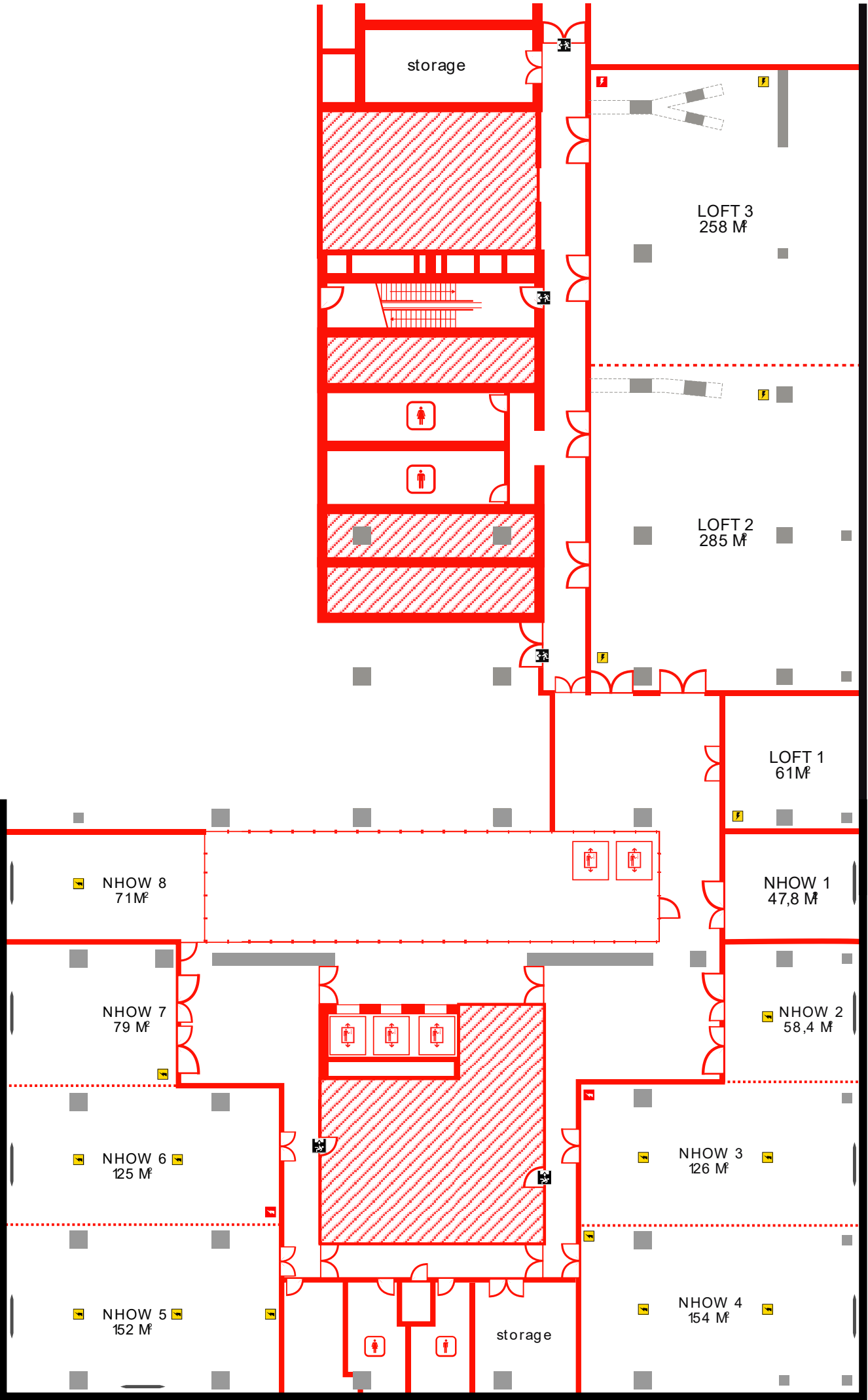
nhow 1	18	18	18	24	38	29	18	38
nhow 2	18	18	18	24	50	30	18	50
nhow 3	36	39	42	45	150	70	36	150
nhow 4	36	39	42	45	150	70	36	150
nhow 5	36	39	42	45	110	70	36	110
nhow 6	36	39	42	45	110	70	36	110
nhow 7	18	18	24	24	60	39	18	60
nhow 8	16-	-	-	-	-	-	16	
Loft 1	12	18	24	22	40	30	12	40
Loft 2	32	38	60	42	120	90	150	250
Loft 3	30	36	60	46	100	70	100	150
Loft 2+3	96	38	120	46	220	160	250	400
nhow 3+4	72	71	114	84	300	140	72	300
nhow 2+3+4	72	71	132	84	350	170	72	350
nhow 2+3	36	39	60	45	200	100	36	200
nhow 5+6	72	48	84	54	240	150	72	240
nhow 5+6+7	72	48	108	54	300	150	72	300
nhow 6+7	36	39	66	45	170	100	36	170





floor plan

 ELEVATORS  TOILETS  EMGENCY EXIT  220V  32A  SCREEN





nH Meetings

nhow
ROTTERDAM

get energetic with our
meeting packages

how energetic do you want to get?



super power
€145



fully loaded
€105



recharged
€95



charging
€85



getting started
€72.50

We get it. Sometimes you just want to start of with a little bit of energy to see which level works for you. But if you dare to go for all the sparks, we challenge you to go for our super power! package to discover the true how spirit.

our packages

full day, 8 hrs

- Meeting room rental with free wi-fi
- Flip chart, screen & beamer
- Battery recharger lunch
- Tempting break: morning power
- Tempting break: afternoon power
- Always-on mineral water
- Welcome coffee & tea
- Always-on fruit in meeting room
- Always-on soft drinks for the sugar lovers
- Always-on coffee & tea in our lounge
- Water to go go go
- Kickstart welcome package, upon arrival
- Fresh juices and nhow style smoothies
- Unplug closing package 1hr drinks & snacks
- Always-on power snacks in meeting room
- 3 course energy dinner or buffet



super power
€145



fully loaded
€105



recharged
€95



charging
€85



getting started
€72.50

✓	✓	✓	✓	✓
✓	✓	✓	✓	✓
✓	✓	✓	✓	✓
✓	✓	✓	✓	✓
✓	✓	✓	✓	✓
✓	✓	✓	✓	
✓	✓	✓	✓	
✓	✓	✓	✓	
✓	✓	✓		
✓	✓	✓		
✓	✓	✓		
✓	✓	✓		
✓	✓			
✓	✓			
✓				

tempting food & drinks



kickstart welcome package

Your first treats upon arrival! And first impressions count, so we've gone all out to impress with for example cookies, pastries, fresh fruit, natural yoghurt with a touch of fruit and crumbled apple pie. Tuck in!



power snacks in the meeting room

A power pack full of sweet and savory snacks, from nut or muesli bars, to sweets, vegetable crisps and hand fruit



morning power your tempting break in the morning

A healthy snack and a sweet guilty pleasure, served with refreshing drinks.



unplug closing package 1hr drinks & snacks

Winding down is just as import as charging up, so enjoy 3 snacks per person (meat, veggie, and fish options), and choose between soft drinks, draft beer, and house wine. Cheers to a hard day's work!

tempting food & drinks



afternoon power

your tempting break in
the afternoon

The perfect combo of something
savory and something sweet, plus
colorful drinks to wash it all down.



fresh juices and how style smoothies

Bright colors, tempting flavors,
happy stomachs!



batter recharger lunch

A street food experience to share.
Think fresh bread, delicious dips, cold
cuts and surprising bites. Veggie
options are always included to make
sure there's something for everyone
to enjoy.



3-course energy dinner or buffet

A variety of tasty dishes to share, with
flavors from around the world. Hot and
cold starters, warm main course items
including side dishes (veggie option is
always included). And to finish: your
very own dessert. Yummy!

get more with our plug-ins

✓ Always-on mineral water	6.95	✓ Always-on power snacks in meeting room	6.95
✓ Welcome coffee & tea	4.95	✓ 3 course energy dinner or buffet (or buffet for >30 people)	44.95
✓ Always-on fruit in meeting room	4.95	✓ Always-on drinks during dinner (soft, beers, wines)	22.95
✓ Always-on soft drinks for the sugar lovers	7.95	✓ nhow cocktail (with or without alcohol)	11.95
✓ Always-on coffee & tea	6.95		
✓ Water to go go go	1.95		
✓ Kickstart welcome package	6.95		
✓ Fresh juices and nhow style smoothies	6.95		
✓ Unplug closing package 1hr drinks & snacks	18.95		

*Prices quoted are per person and only applicable as an upgrade to our standard packages, all prices are in euros and include taxes and fees.



our
hotels

where can you find us

You can find us in the coolest
spots in Europe, always located in
the most energetic area of town.



nhow
ROTTERDAM

do you dare?

THEN PLEASE GET IN TOUCH:

 nhow-rotterdam.com

 +31 (0)85 902 2300

 nhgroupsales.nl@nh-hotels.com

 nhpro.com/meetings

 linkedin.com/nhmeetings

 instagram.com/nhowrotterdam

nhow
ROTTERDAM